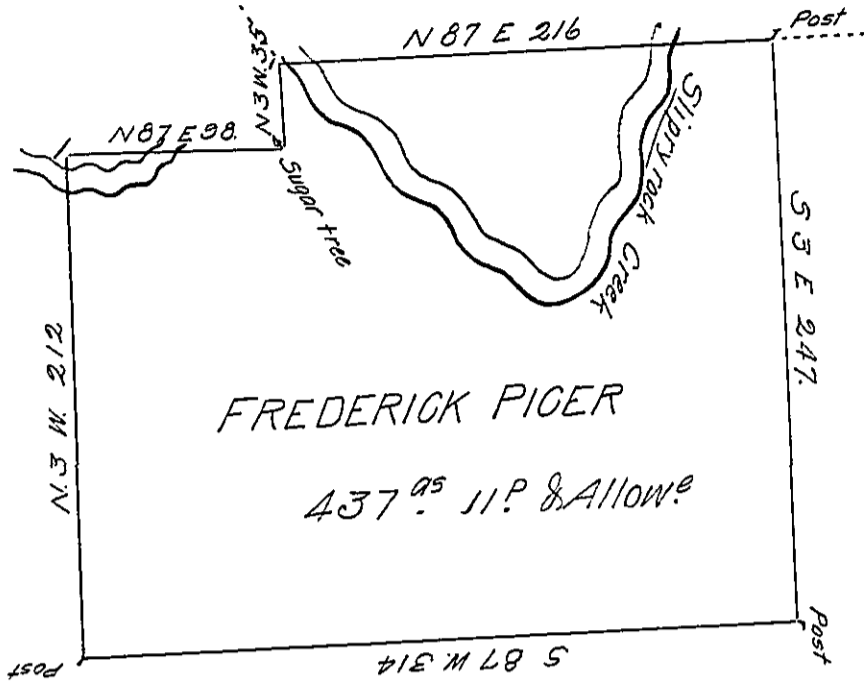


C 137. 134

William Elliott

C 137-137  
Charles Martin



John Piger

The above is a Draft of a Tract of Land which was Surveyed to Fredrick Piger on the 2<sup>d</sup> day of February 1805 by Virtue of his Warrant dated the 16<sup>th</sup> day of March 1802 Containing four Hundred thirty Seven Acres & 11 P. Allowance of Six Per Cent & c Including his Actual Settlement and Improvement Situate on Slippery Rock Creek Where the Line Crosses Said Creek in the County of Butler.

Ja<sup>s</sup> Irvine D.S.

To Samuel Cochran Esquire  
Surveyor General of Pennsylvania

IN TESTIMONY that the above is a copy of the original remaining on file in the Department of Internal Affairs of Pennsylvania, made conformably to an Act of Assembly approved the 16th day of February, 1833, I have hereunto set my Hand and caused the Seal of said Department to be affixed at Harrisburg, this thirtieth day of April 1906.

*Good D. Brown*  
Secretary of Internal Affairs.